

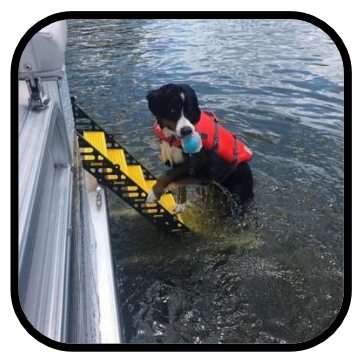
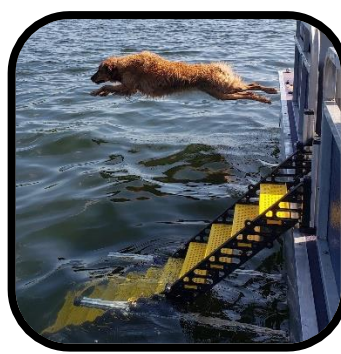
WaterDog Adventure Gear®

WAG Boarding Steps™

Model HSM-10

Owner's Manual

U.S. Patent No. 9,815,529



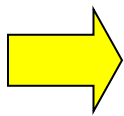
Read this manual completely and follow instructions prior to use.

Improper use may cause injury and/or equipment damage.

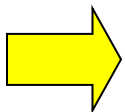
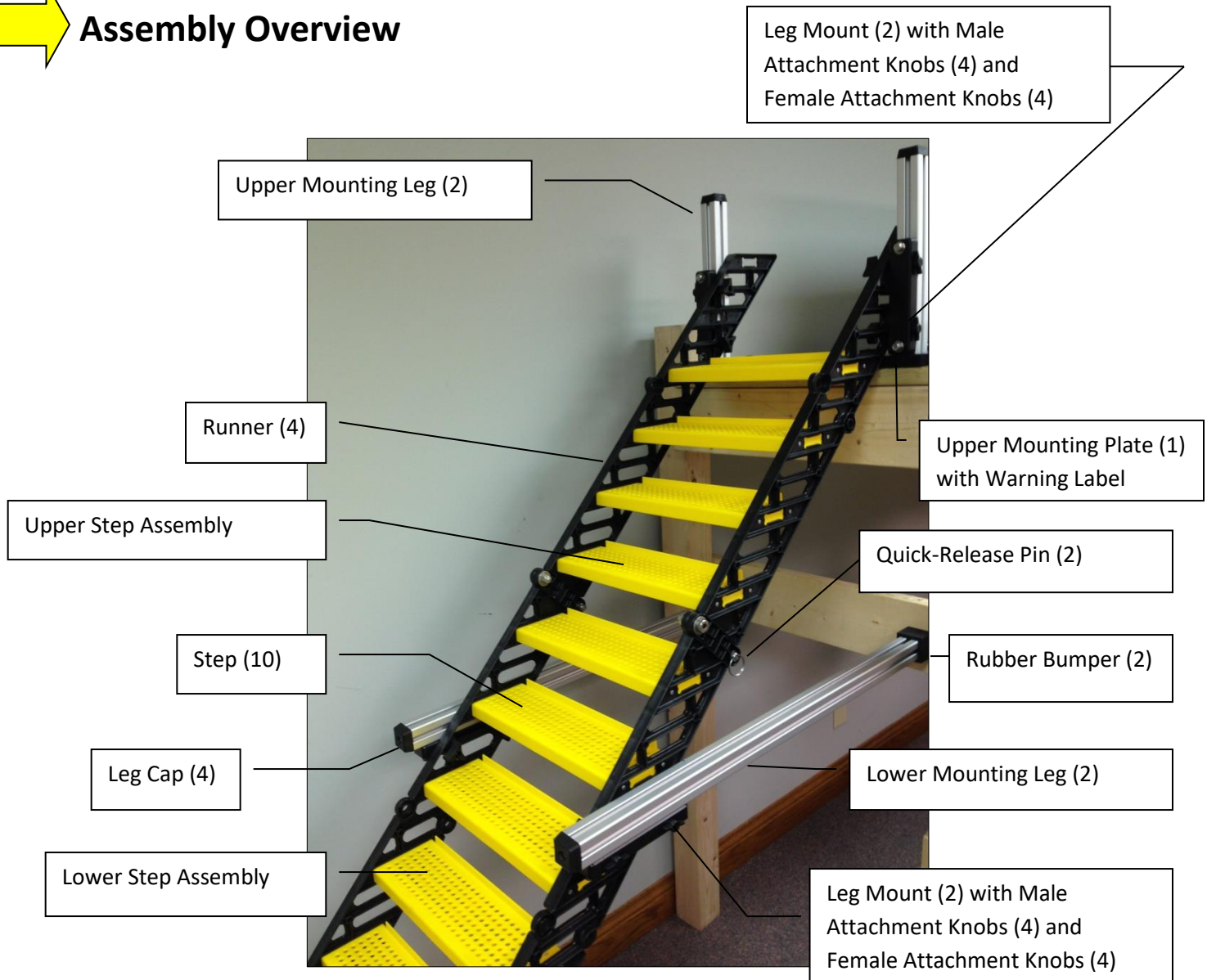
WAG Boarding Steps have a maximum capacity of 130 pounds and are designed for dog use only.

Welcome to the WaterDog Adventure Gear® family and thank you for your purchase!

As excited as you and your dog are to begin using your WAG Boarding Steps, there are a few important actions to take prior to use and for safe and enjoyable ongoing ownership.



Assembly Overview



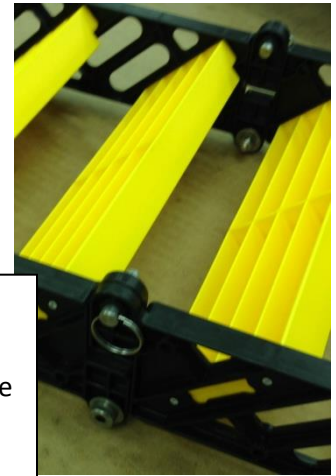
Assembly

Tools Required: 3/16" hex driver, 5/16" hex driver, 1/2" socket driver, drill with 5/16" and 3/8" bits

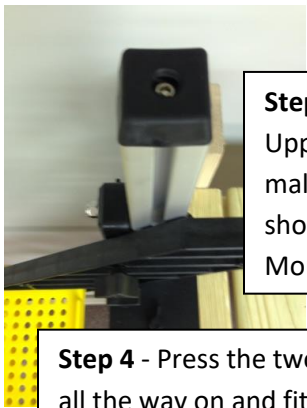
Your new WAG Boarding Steps come partially assembled from the factory. Most hardware is inserted in the component where it will be required. Carefully unpack contents of shipping carton to avoid damage or loss of hardware. Some stainless steel screws are pre-treated with ECK® Corrosion Protection Compound which also serves as an anti-seizing agent.



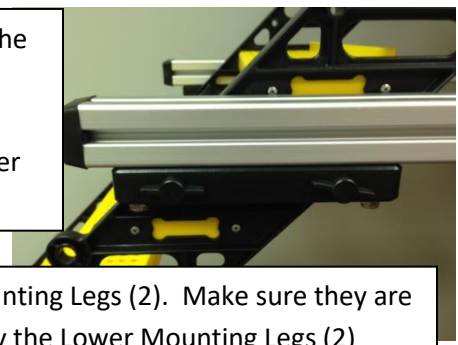
Step 1 - Attach the Upper Mounting Plate to the tapped end of each Upper Mounting Leg using the two (2) 5/16-18NC button head cap screws provided. The Leg Mounts should be facing the long side of the Plate above the Warning Label.



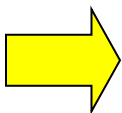
Step 2 - On a flat surface, remove the two (2) Quick-Release Pins in the folded Step Assemblies, carefully unfold them flat, and re-insert the quick release pins in the holes between the Upper Step Assembly and the Lower Step Assembly. Do not twist the Step Assemblies while unfolding.



Step 3 - Attach the Upper Mounting Plate Assembly to the Upper Step Assembly top pair of vertical holes using the male and female Attachment Knobs. The Leg Mounts should be facing the Steps. Final positioning of the Upper Mounting Legs will occur during installation.



Step 4 - Press the two (2) Rubber Bumpers on the ends of the Lower Mounting Legs (2). Make sure they are all the way on and fit tightly. Determine how far down the Step Assembly the Lower Mounting Legs (2) should be to contact the boat hull or centerline of the pontoons. This can be done by measuring the distance from the boat mounting surface to the desired contact point of the Lower Legs. This should be the distance from the bottom of the Upper Mounting Plate to the centerline of the Lower Mounting Legs. The Legs can be attached with the Leg Mounts above or below (pictured) to achieve the desired distance. The large Rubber Bumpers should be under the Upper Mounting Plate. Attach to a pair of horizontal holes in the Lower Step Assembly using the male and female Attachment Knobs. Final positioning of the Lower Mounting Legs will occur during installation.



Installation/Use



The assembly is now ready for installation in any 18-1/2" wide deck edge that is over a pontoon. This is best accomplished with one person holding the assembly in position and a second person making the necessary adjustments and marking the Upper Mounting Plate attachment points. Determine the mounting location with the Upper Mounting Plate sitting on the horizontal surface as close to the edge as possible. While holding the Upper Mounting Assembly in position, adjust the Lower Mounting Legs by loosening the hex nuts on the Leg Mounts and sliding the Legs in or out to make contact with the boat hull or pontoon to get the Step Assembly at a 45-degree angle. The Upper Mounting Plate should be sitting flat and the Steps should be level. Tighten the nuts and check to ensure the Bumpers on both Lower Legs are making good contact and the Step Assembly is not twisted. To fine tune the contact point, loosen the Leg Mount hex nuts on the Upper Mounting Assembly and raise or lower the assembly. Re-tighten the nuts. If fitment looks good, the Upper Mounting Assembly is now ready for attaching to the boat horizontal mounting surface.



The recommended mounting method is to install flush female threaded inserts (pictured and provided) in the horizontal surface and use male knobs. Holding the Upper Mounting Plate in the desired position, match drill two (2) 5/16" holes (opposite ends) through the Upper Mounting Plate and mounting surface. Avoid hitting a metal structural member. An optional third can be installed in the middle of the Upper Mounting Plate along an edge to form a triangular mounting pattern for maximum stability. Remove the assembly and enlarge the deck holes to 3/8". Using a 5/16" hex driver, thread the inserts into the deck until they are flush. Back inserts out and retry, if turning hard. Attach the assembly using the 5/16-18NC male knobs provided. **Do not overtighten. These knobs just need to be snug to the Mounting Plate.** Test the assembly for stability before allowing your dog to use. If desired, the Lower Mounting Legs can be shortened to remove any portion sticking out beyond the Step Assembly. To do this, remove the Rubber Bumpers and cut that end by the desired amount, reinstall the Bumpers and reposition the Leg Mounts. To remove the assembly for transport and storage, remove the male knobs and lift the assembly into the boat. The unit can be folded or stored in a WAG BAG™ by removing the Lower Mounting Legs and Upper Mounting Plate Assembly using the male and female Attachment Knobs and folding the Step Assembly (reversing assembly procedure).

Training

It is highly recommended that you train your dog in shallow water where you can stand to the side as your dog gets used to WAG Boarding Steps. Some dogs may try to wrap their legs around them like a tree trunk or reach up trying to pull themselves up and stick their leg between the steps. Having your dog approach them straight on and spotting them to keep their legs under their chest (like they do stairs at home) will get them comfortable with this new thing they have never seen before. They should be able to swim on and walk up by themselves. Once they are used to it, they will learn to come in from the side and do it with large objects in their mouth. Periodically check for damage to the equipment and your boat. Remember, WAG Boarding Steps are for **dog use only**.

Care and Maintenance

Your new WAG Boarding Steps are constructed from high-quality materials that should provide years of enjoyment.

- All fasteners are stainless steel (except for the step rivets and washers which are aluminum). Check for loose or missing fasteners prior to use and tighten or replace as necessary.
- The metal parts are anodized aluminum extrusions which offer excellent stiffness for their weight. Periodically check for bent or cracked parts and replace as necessary.
- The plastic parts are formulated for outdoor use and have good impact resistance. Periodically check for cracked parts and replace as necessary. Remove your step assembly when not in use and store out of direct sunlight for maximum life. Rinse with fresh water, if necessary.

Customer Support

For questions regarding your WAG Boarding Steps or to order replacement parts, please contact our toll-free customer support line at:

1-877-WAG-2272 (1-877-924-2272)