

WAG Boarding Steps™

Model DM-12

Owner's Manual



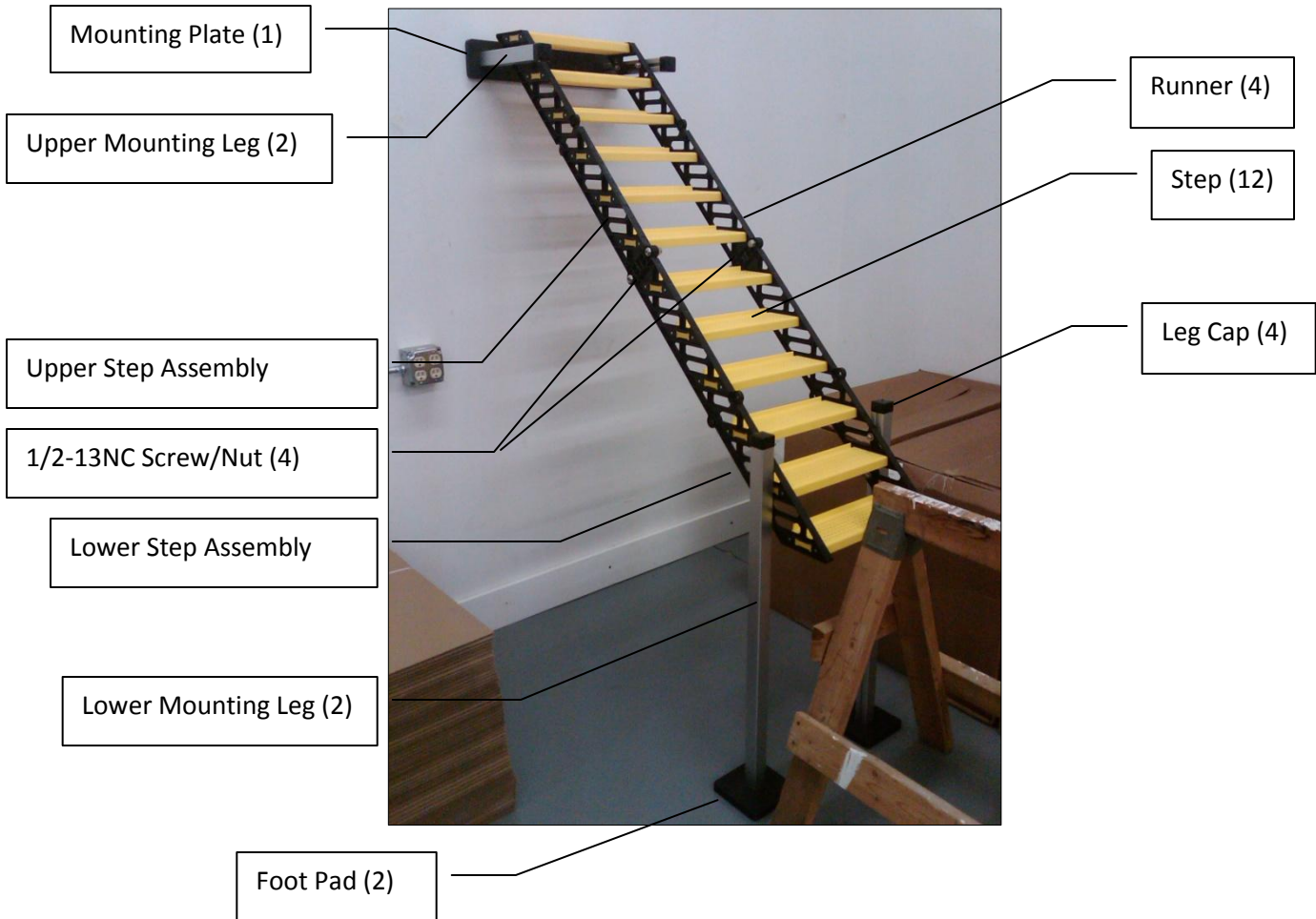
Read this manual completely and follow instructions prior to use.

Welcome to the WaterDog Adventure Gear™ family and thank you for your purchase!

As excited as you and your dog are to begin using your WAG Boarding Steps, there are a few important actions to take prior to use and for safe and enjoyable ongoing ownership.

Improper use may cause injury and/or equipment damage.
WAG Boarding Steps have a maximum capacity of 130 pounds
and are designed for dog use only.

➔ Assembly Overview



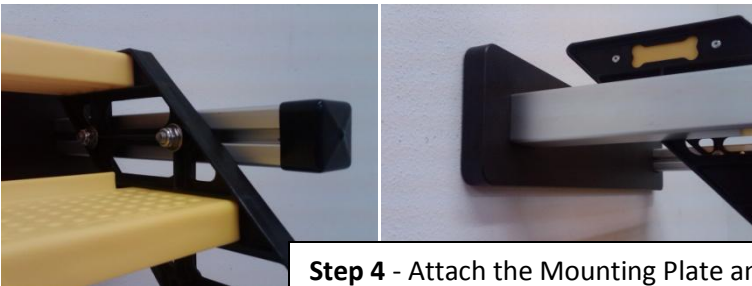
Assembly

Tools Required: 1/2" socket driver, 3/4" socket driver, 3/16" hex driver, 5/16" hex driver

Your new WAG Boarding Steps come partially assembled from the factory. Hardware is inserted in the component where it will be required. Carefully unpack contents of shipping carton to avoid damage or loss of hardware. All stainless steel screws and bolts are pre-treated with ECK® Corrosion Protection Compound which also serves as an anti-seizing agent.

Step 1 - Attach the Foot Pads to the tapped end of each Lower Mounting Leg using the two (2) 5/16-18NC button head cap screws provided.

Step 2 - Remove the two (2) 1/2-13NC button head cap screws and nylon locking nuts from the middle of the folded Step Assembly. Carefully unfold the Step Assembly on a flat surface. Reinsert the screws in the aligned tabs on both sides. Tighten all four (4) 1/2-13 NC button head cap screws and nylon locking nuts.



Step 3 - Attach the Mounting Plate to the tapped end of each Upper Mounting Leg using the two (2) 5/16-18NC button head cap screws provided. A slotted side of each Mounting Leg should be facing the center of the Mounting Plate.

Step 4 - Attach the Mounting Plate and Upper Mounting Legs sub-assembly to the Upper Step Assembly by removing the Leg Caps and sliding a slotted side of the legs over the heads of the four (4) 5/16-18NC carriage bolts in the Runners of the Upper Step Assembly. The bolts can be relocated, if desired. The Mounting Plate can be configured as shown for a vertical surface mount or rotated 90 degrees for a horizontal surface mount. Once the desired location and orientation of the Mounting Legs is determined, secure them using the washer and nylon locking nut provided with each bolt. Secure the Leg Caps with adhesive.



Step 5 - Attach the Lower Mounting Leg and Foot Pad sub-assemblies to the Lower Step Assembly by removing the Leg Caps and sliding the slotted side of the legs over the heads of the four (4) 5/16-18NC carriage bolts in the Runners of the Lower Step Assembly. The bolts can be relocated, if desired. Once the desired location of the Mounting Legs is determined, secure them using the washer and nylon locking nut provided with each bolt. Secure the Leg Caps with adhesive.

Installation



The assembly is now ready for installation in up to 6' of water. Determine the attachment points and drill mounting holes in the Mounting Plate. Hardware (not provided) should be non-corrosive, through-bolted and have adequate strength for the application. The top step should be set to be between 4" below (ideal) and 4" above the mating horizontal surface. The area below the Foot Pads should be firm and flat. Anchoring holes can be drilled in the Foot Pads, if desired. Weighting with rocks or concrete blocks is recommended. Adjust the Lower Mounting Legs so that the steps are level and the assembly is at a 45 degree angle. If necessary, the Lower Mounting Legs can be shortened by cutting the excess material off the Leg Cap (untapped) end. Test the assembly for stability before allowing your dog to use. It is recommended that someone be in the water adjacent to the assembly during the first few times the dog uses them.

Care and Maintenance

Your new WAG Boarding Steps are constructed from high-quality materials that should provide years of enjoyment.

- Periodically check mounting structure (dock, pier, seawall, etc.) for damage or water condition changes. Proper alignment of WAG Boarding Steps is critical to prevent damage or injury. Adjust Lower Mounting Legs as necessary.
- All of the fasteners are stainless steel or aluminum. Check for loose or missing fasteners prior to use and tighten or replace as necessary.
- The metal parts are anodized aluminum extrusions which offer excellent stiffness for their weight. Periodically check for bent or cracked parts and replace as necessary.
- The plastic parts are formulated for outdoor use and have good impact resistance. Periodically check for cracked parts and replace as necessary.

Customer Support

For questions regarding your WAG Boarding Steps or to order replacement parts, please contact our toll-free customer support line at:

1-877-**WAG**-2272
(1-877-924-2272)